

better

AUGUST 2017 118-page Issue

₹ 125

# interiors

IDEAS AND DESIGN FOR BETTER LIVING

## EARTHY SERENITY

Design Work Group creates Urveel, a modern second home in Surat that engages with its surroundings — both in its layout and choice of materials

### + BEST BUYS

60 furnishings, furniture and decor items that celebrate the grace of all that's bespoke and handcrafted

Also featuring: Aura Dezyne, Kham Consultants, Sapras Architects & Engineers and Yellow Door

Network 18



**CEO-NEWS AND GROUP EDITOR-IN-CHIEF**  
Rahul Joshi

**CHIEF HUMAN RESOURCES OFFICER - NETWORK18**  
P Sakhtivel

**EDITOR**  
Deepa Nair

**SENIOR FEATURES WRITERS**  
Alifiya Mehamdabadwala  
Rashmi Karanjekar

**ASSISTANT ART DIRECTOR**  
Vilas Salve

**ASSISTANT MANAGER - PRODUCTION**  
Ravi Salian

**SENIOR EXECUTIVE - PRODUCTION**  
Ravikumar S Potdar

**PRINTING**  
**MANAGER- PRODUCTION**  
Dnyaneshwar Goythale

**SENIOR EDITOR- ONLINE**  
Sanjay Yalavatti

**ADVERTISING SALES & MARKETING**  
**VICE PRESIDENT - SALES & MARKETING**  
Amit Seth

**NATIONAL SALES HEAD**  
Som Gupta (som.gupta@nw18.com), 98100 53179  
West: Shilpa Sethi (shilpa.sethi@nw18.com), 9920112486  
South: Dennis Mathew (dennis.mathew@nw18.com), 98450 96107

**ASSISTANT MANAGER**  
Abhijit Bhoir (abhijit.bhoir@nw18.com)

**NEWS STAND AND SUBSCRIPTIONS**  
**HEAD-CIRCULATION & SUBSCRIPTION**  
Kripanand S  
West: **Mumbai:** Sanjay Bhujle, Dinesh Devadiga, Laxman  
North & East: Kamal Bisht  
Chennai: A. Karunanithi  
Hyderabad: Naveen

**NEWS-STAND ACCOUNTS**  
Anant Athavale, Rahul Mankar

**SUBSCRIPTION TEAM**  
Kamlesh Mathkar, Vaibhav Ghavale (9324490187)

**LOGISTICS**  
Anant Shirke

**SERVICES**

**CIRCULATION SERVICES:** If Better Interiors is not available at your news stand, or for other news stand queries, write to [customercare@nw18.com](mailto:customercare@nw18.com)

**SUBSCRIPTION SERVICES:** For subscription queries, write to [customercare@nw18.com](mailto:customercare@nw18.com) or call +91 22 33634760 / 4562

**PERMISSIONS:** For permissions to copy or reuse material from Better Interiors, write to [deepa.nair@nw18.com](mailto:deepa.nair@nw18.com)

Views and opinions expressed in this magazine are not necessarily those of Network18 Media & Investments Limited\*, its publisher and/or editors. We at Network18 do our best to verify the information published but do not take any responsibility for the absolute accuracy of the information. Network18 does not accept the responsibility for any investment or other decision taken by readers on the basis of information provided herein. Network18 does not take responsibility for returning unsolicited material sent without due postal stamps for return postage. No part of this magazine can be reproduced without the prior written permission of the publisher. Network18 reserves the right to use the information published herein in any manner whatsoever.

Published and printed by Amit Seth on behalf of Network18 Media & Investments Limited.  
Editor: Deepa Nair Printed at Kalajyothi Process Private Limited W-17/18, MIDC Talaja District: Raigad, Maharashtra PIN Code : 410208.  
& published at Network18 Media & Investments Limited, Empire Complex, 1st Floor, 414, Senapati Bapat Marg, Lower Parel, Mumbai - 400 013. For all international subscription enquiries, contact the Subscription Department, Better Interiors All editorial queries must be directed to the Editor, Better Interiors, Network18, Special Interest Publications Division, Network 18 Media & Investments Ltd., Unit No. 501, 5th Floor, Tower - I, One Indiabulls Centre, Jupiter Textile Mills, Senapati Bapat Marg, Elphinstone Road, Mumbai - 400013. Board Number: 022-3363 4400; Direct Number: 022-3003 4623; Email: [deepa.nair@nw18.com](mailto:deepa.nair@nw18.com)

Better Interiors is registered with the Registrar of Newspapers of India under No.MAHENG/2005/20148. Network18 does not take any responsibility for loss or damage incurred or suffered by any subscriber of this magazine as a result of his/her accepting any invitation/offer published in this edition.

\* ownership of this magazine stand transferred from Infomedial8 Limited (Infomedial8) to Network18 Media & Investments Limited (Network18) in pursuance of the scheme of arrangement between Network18 and Infomedial8 and their respective shareholders and creditors, as approved by the Hon'ble High Court of Delhi and the necessary approval of Ministry of Information and Broadcasting is being obtained.



## Bespoke Luxury

A few days ago, I received a beautifully handwritten letter from a close friend. Yes, a handwritten letter which is a novelty today. I stared at it for hours, not just for the thoughtful words which she wrote but for time invested in penning them on four A4-sized handmade paper. In today's cosmetic, fast-paced, e-mail and WhatsApp-filled lives... these humble letters are treasures. In a similar vein, when we source any decor piece for our homes — from carpets to furniture to lighting to furnishing to serveware — the handcrafted ones have a special place in our hearts. Therefore, this month for our Bazaar section, we have reached out to all those special brands that promote and sell products that are crafted by hands.

Our cover story this month — a second home for a Surat-based entrepreneur, designed by the young team at Design Work Group — is another bespoke presentation. Nestled in the centre of mango and chickoo trees, the Urveel bungalow has deep conversations with nature. The other two homes, one in Kolkata designed by architect Monica Bhargava and the other in Bangalore by Yellow Door, are both apartments that came with distinct requirements — both poles apart in their design language but filled with interesting details. If the homes were all prim and proper, the retail space we feature this month, the flagship showroom of Harley-Davidson in New Delhi designed by architect Romesh Sapra, wears its ruggedness with pride. In contrast to all the projects, is a feature on the return of the famous all-day diner Bombay Brasserie in Mumbai. Prepare to be easily charmed by the interiors — created by interior designer Payal Khanna — which are a mix of the old and the new.

Ready to be wowed? Dive right in...

Deepa Nair  
Editor

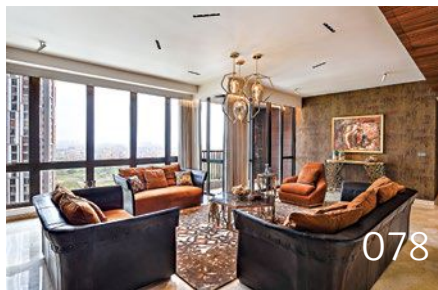
### editor's pick

The intricacy of the striking design of the Floral Fantasy Cherry Blossom cast crystal sculpture by Swedish brand Maleras simply blew my mind. That it is handpainted using organic colours makes it more special.



# Contents

AUGUST 2017



## 038 **Thing Tank** SHOWING METTLE

The Lohasmith, a bold new endeavour of Meghna Malik and Karun Malik creates clean-lined, functional furniture and accessories crafted in metal.

## 044 **Bazaar** HANDCRAFTED ELEGANCE

A handpicked selection of breathtaking furniture, furnishings and accessories which celebrates the timeless beauty, uniqueness and worth of handmade products.

## 058 **Habitat** TIED TO NATURE

Design Work Group builds a second home on the outskirts of Surat that celebrates the lush greenery it is surrounded by, and revels in an earthy material palette.

## 070 **GETTING PERSONAL**

Designed by architects Joshua John and Juhi Patel of Yellow Door, a Bangalore apartment has a warm welcoming aura induced through an India modern design scheme, and by the people who occupy it.

## 078 **MINIMAL GEOMETRY**

Architect Monica Khosla Bhargava of Kham Consultants uses a hexagonal design scheme to convert a 4-BHK apartment in Kolkata into a chic, classy and sophisticated abode.

## 086 **Off the Shelf** RUGGED LUXURY

Architect Romesh Sapra gives the Red Fort Harley-Davidson showroom in New Delhi a modern industrial look by using a careful mix of raw materials in their natural forms.

## 094 **Space & Spice** THE BB SANCTUARY

The latest outlet of the famous Bombay Brasserie in Worli, Mumbai, designed by interior designer Payal Khanna is a mix of old-world charm and contemporary class.

## 100 **Snapshots**

Whether it's the magical decor of La Folie Lab in Mumbai, the restored charm of Mangaldas ni Haveli II in Ahmedabad, the minimal yet contemporary skin of the OYO Townhouse in Bangalore or the subtly luxurious decor of a show flat in Mumbai's Rustomjee Elements... these projects are here to floor you.

## Regulars

- 018 Roundabout
- 026 Art Walk
- 028 Eco Beat
- 030 High Five
- 032 Pick of the Month
- 034 Swish List
- 108 Gallery
- 114 Directory

**Cover photograph:**  
Photographix |  
Sebastian + Ira;  
Courtesy Design  
Work Group  
Turn to "Tied to  
Nature" on page 58

# Habitat

A view of the living room, the key space for the Devatha family to spend quality time. Handpicked wall art, suspended lights from The Purple Turtles, bright throw cushions and a colourful geometric carpet from Dash Square adds a warm character to the space.



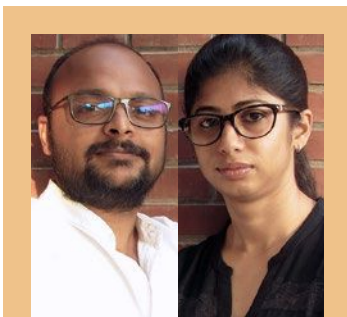


Keeping in mind the client's love for books, the sofa is custom designed with a small bookshelf, conveniently tucked to one side, which functions both as a bookcase and a coffee table.

# Getting Personal

Architects Joshua John and Juhi Patel of Yellow Door create a warm, welcoming contemporary Indian home in Bangalore which reflects the personalities of its inhabitants who span multiple generations.

TEXT: SANJUKTA NANDY; PHOTOGRAPHS: SHAMANTH PATIL J, COURTESY YELLOW DOOR



## ARCHITECTS

Joshua John and Juhi Patel

**S**hriram Devatha, a young professional who runs his own recording studio in Bangalore and teaches as well, was on the look-out for a designer who could understand his outlook when it came to designing his newly purchased apartment. A friend put him in touch with the young design firm Yellow Door, helmed by architects Joshua John and Juhi Patel.

Juhi says, "Before we met up with Shriram, he had already seen our previous works and was on the same page with us as far as the design outlook was concerned. Hence, we were bestowed complete creative freedom. His brief included two caveats: he wanted to be an active participant in the design process of his home; and a warm and cosy home that he and his family could come back to each day."



This was an interesting brief for the designers who aspire to create a practice with a strong essence of contemporary ethos, keeping the end user in mind. After having graduated from RV Engineering College, Bangalore, and completing their masters from Advanced Architecture of Catalonia, Barcelona, the young architects went on to form their practice, Yellow Door, in Bangalore, in 2014. Juhi says, "Though we studied together in Bangalore, it was in Spain, when we started working on more group projects, that we realized our common creative vision and went on to establish our practice in India. Home design is one of our fortes."

A house becomes a home when it reflects the occupant's personality and is customized to their specific needs. The 2,500 sq ft home of the Devathas, who are warm people with a strong love for Indian culture and art, is designed with a welcoming appeal, where as one walks through the various rooms, the warmth and elegance of a contemporary Indian theme abounds. Cement textured walls, concrete lights, teak paneling and artwork by modern Indian artists like Siva Balan, M Rama Suresh, Amit Bhar and Anjali Sapra give this home several talking points.

The spatial layout is simple. Past the entry doorway, a linear corridor gives a clear view of a pooja room at the other end. The corridor

**CONCEPT:** To execute a modern Indian design while creating a home that exudes warmth and reflects the personalities of its members.



**TOP** Wearing a warm disposition, the dining area houses a table for six with enough space to expand if needed to hold a larger party. A wooden panel — a common design element — runs above the table with suspended concrete dome lights. The curtained backdrop ensures natural light seeps in while thoughtfully curated wall art gives the space a touch of elegance.

**ABOVE** The kitchen design revolves around a tactful play of function and a colour palette where the core colour is white with a pop of yellow offering a visual break.



The pooja room partition bears a laser-cut lotus themed design with a natural teak veneer finish on matte melamine that infuses a serene calm in the area, while the glass panels on the sides and above the door bring in natural light.

# Habitat

ceiling is clad in wood with subtle cove lighting that forms the beginning of a design element that binds all the common spaces in the home. A cement textured gallery wall, adorned with black and white images of three generations of the family, renders the first intimate connect with the members of the home. The pooja room at the end of the entrance corridor separates the living and the dining. Here, the double doors have been designed with laser-cut lotus motifs that symbolize the purity contained within and double as ventilation *jaalis* too. The glass panels on the sides and above the door bring in some natural light into this serene space.

To the right of the pooja room is the living room. This space best highlights the customized options created for the family's lifestyle. In keeping with the contemporary Indian look, an earthy colour palette has been maintained with beige sofas and a deep armchair set against wooden doors. Splashes of colour have been brought in the form of bright throw pillows and a carpet. Customized blinds, with an inherent geometric dialect, add to the visual dynamics of the space. The three-tier copper-finished suspended lights add to the ambient lighting of the space. Every element of furniture and lighting in the living room has been sourced specifically to suit the needs of the family. For the client, who is an

**RIGHT** The linear entrance corridor visually connects the living and dining spaces of the home. A grey armour-coated finish on the walls gives a cosy, homely feel.

**BELOW** The corridor ceiling is clad in wood with subtle cove lighting. This forges a bond with a design element that binds all common spaces in the home. A cement textured gallery wall adorned with black and white images of three generations of the family introduces the members of the house. A bench from Fabindia and wall art gifted by close friends embellish the entry corridor.







**ABOVE** The aesthetics of the study consciously veers towards an old-world library look. A teak bookcase runs the length of a wall, while a vintage world map snugly fits on the ceiling.

**LEFT** A refurbished sofa upholstered in bright yellow with a floor lamp reflects the personality of the client who loves his restful, creative personal time.

avid reader, a part of the sofa was designed with a small bookshelf, conveniently tucked to one side, which functions both as a bookcase and a coffee table. “Customizing this function into the sofa stemmed from a conversation with the client’s sister, who had mentioned having seen designs with a dynamic form that can easily fit different functions and the client himself, who had said that all he wanted to bring in from his old home was his book collection,” explains Juhi. The spartan teak veneer and wood-panelled entertainment wall displays a warm colour palette with free standing lamps and focus lights and offers a space for the family to unwind.

## MATERIALS

**Walls** Cement finish texture paint, textured paint **Floor** Vitrified tiles **Ceiling** Gypsum board false ceiling, wooden ceiling in ply and veneer, vintage world map printed on vinyl (study) **Windows** UPVC **Lighting** LED bulbs

Juhi says with a hint of satisfaction that after having spent a couple of months in the house, the client mentioned that his mother was very happy in the kitchen space especially because of the backrest of the kitchen seat that forms the beginning of a breakfast counter. This countertop had been designed specifically to turn down and form a seating bay for the elderly members of the family. The U-shaped kitchen, done up in white, is broken aesthetically by a yellow wall adjoining the low




The master bedroom has been designed with simple lines and light oak veneer wooden paneling. The king-sized bed incorporates a storage alcove in the headboard. The entertainment wall is clad in wood with a mounted TV and ample space to store books, curios and an expansive charging point that was installed in deference to the client's love for his gizmos and PlayStation.

seating area and accessorized by suspended lights, while the work triangle has been created such as to ensure enough working space. The kitchen overlooks the dining area that houses a table for six with ample space to expand and hold a larger party if needed. The common element of a wooden panel runs above the table and has suspended concrete dome lights with gold leaf imprints. The curtained backdrop ensures that natural light floods into the dining area while wall art gives the space a touch of elegance.

At the rear of the apartment is the study, guest bedroom and parent's bedroom. The study/library is unconventionally designed with a vintage world map on the ceiling while a wooden bookcase, running the length of a wall, incorporates a reading and working area. A throw rug and lounge chair with a floor lamp towering over it makes for a snug spot to sit down with a book.

The bedrooms are simple with a predominant palette of wood and white finishes. The parents' bedroom includes a bed finished in teak veneer, white Duco wardrobe and upholstery in vibrant purple — the design accurately reflects the parents' choice and personality. Designed with refurbished furniture, the guest bedroom respects a

similar material palette and wears a dignified grace. The master bedroom, near the entrance of the home is done in light oak veneer, with white lacquered, glass-finished cupboards and wall art chosen by the client, and makes for a neatly organized space with modish aesthetics.

The design mantra was to follow the client's brief to the T and arrive at a space that makes a multi-generational family of four feel right at home. On a parting note Juhi says, "The designing began with the wclient trusting us with his home, extended to the mutual respect of aesthetics and finally ended with us becoming friends. We are happy to note that the client's enthusiastic appreciation of our work has even landed us with more homes to work on in his colony!" 

**FACT FILE:** **Project** Devatha Home  
**Client** Shriram Devatha **Location**  
 Vaishnavi Terraces, J P Nagar, Bangalore  
**Area** 2,500 sq ft **Principal architects**  
 Juhi Patel and Joshua John **Artists** Siva  
 Balan, M Rama Suresh, Amit Bhar and  
 Anjali Sapra